

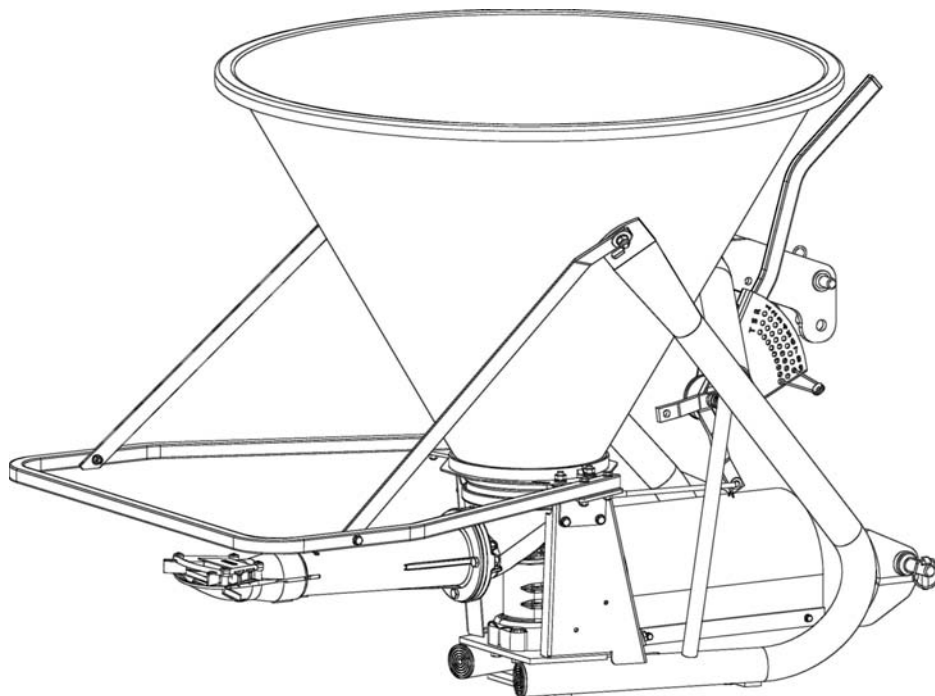
BEFCO®

Parts Manual

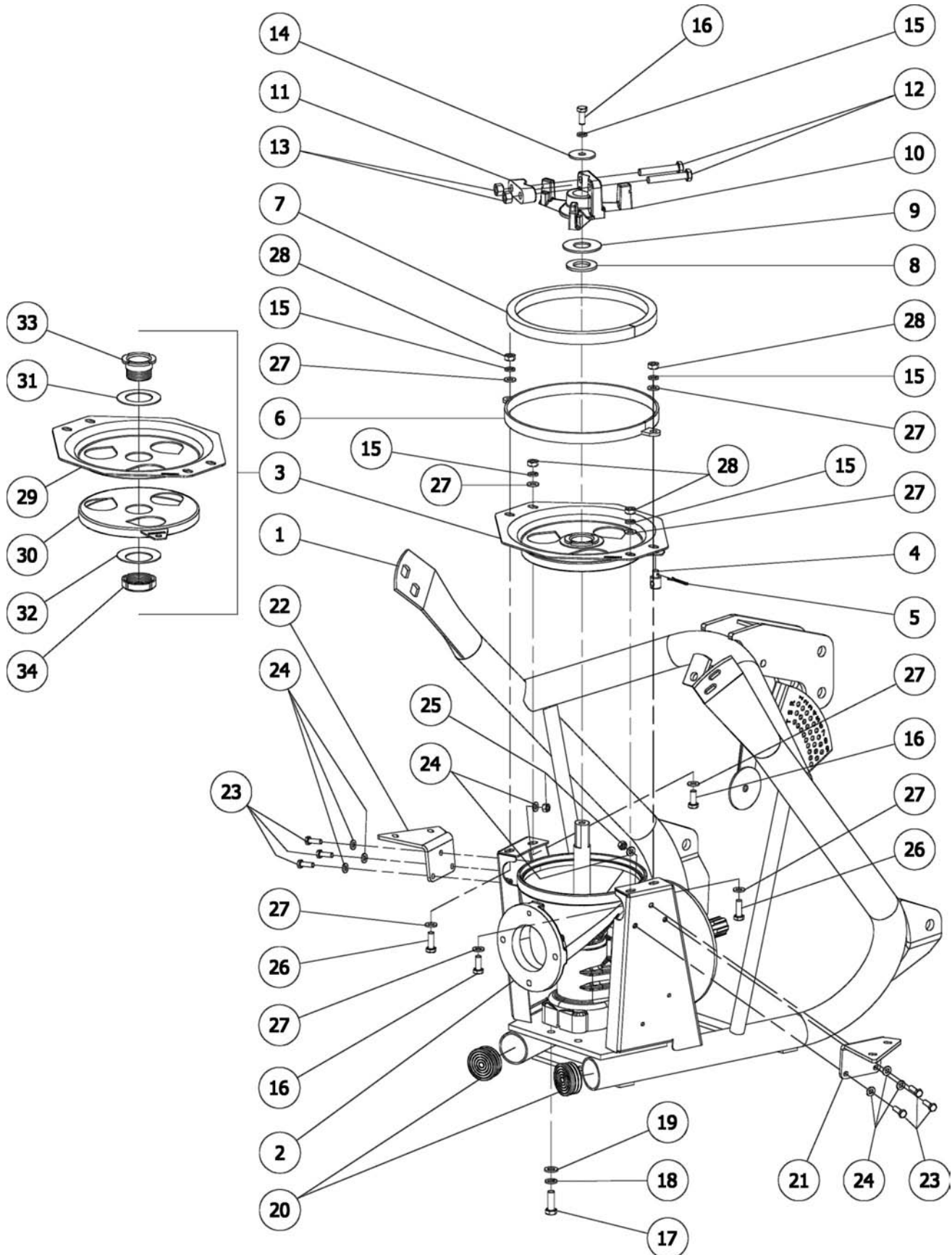
TURBO-HOP

Pendular Spreaders

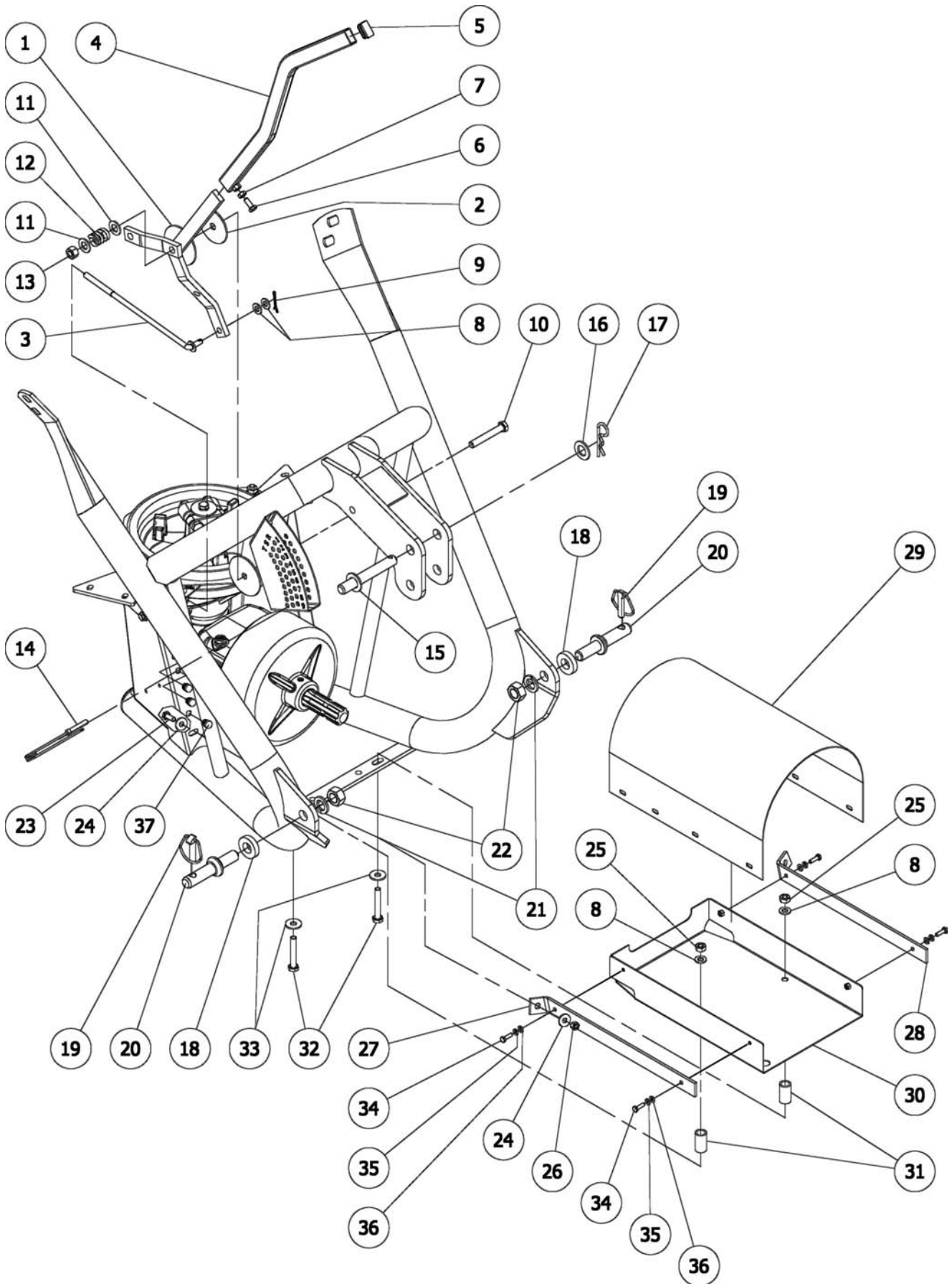
301-300, 301-400



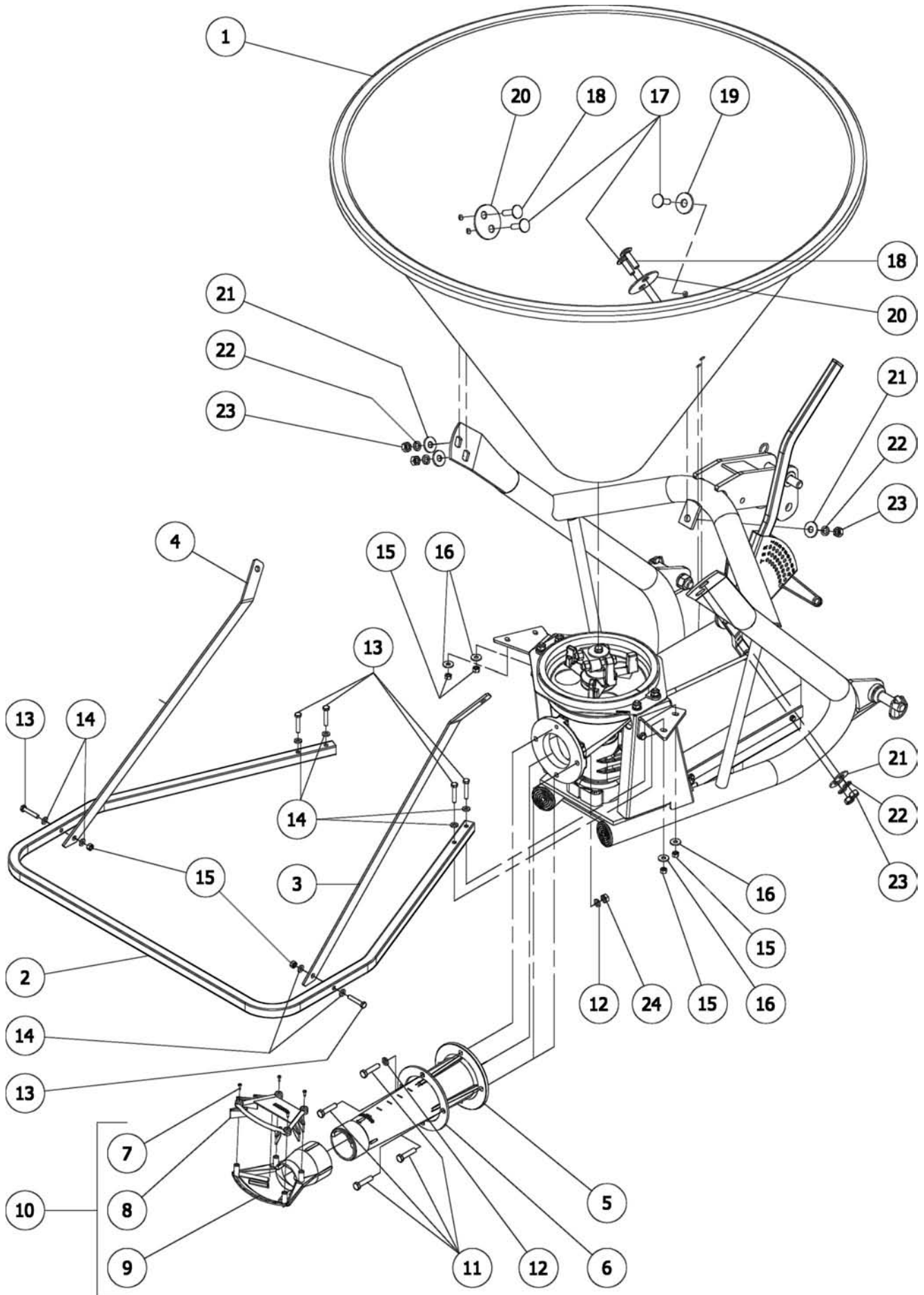
Manual 971-412B
September 2014



Ref.	Part #	Description	Qty.
1	009-5500	Frame; 301-300, 400	1
2	050-0692	Gearbox, complete	1
3	009-5270	Distributing unit	1
4	009-5107	Pawl	1
5	006-7217	Cotter pin Ø3x35 N	1
6	009-5290	Ring	1
7	009-5300	Gasket	1
8	000-3056	Washer flat Ø30 Z	1
9	009-5304	Washer flat nylon Ø31	1
10	009-5310	Agitator	1
11	009-5314	Bracket	1
12	009-5316	Bolt HH M12-1.75x75 C8.8 Z P	2
13	001-3345	Nut ES M12-1.75 Z TK	2
14	005-7273	Washer fender Ø12 Z	1
15	000-1280	Washer lock Ø10 Z	5
16	003-3176	Bolt HH M10-1.50x25 C8.8 Z F	3
17	000-7255	Bolt HH M12-1.75x35 C8.8 Z F	4
18	000-1077	Washer lock Ø12 Z	4
19	000-2265	Washer flat Ø12 Z	4
20	502-020B	Rubber cap Ø60	2
21	019-5570	Protection attachment plate, right	1
22	029-5570	Protection attachment plate, left	1
23	009-1446	Bolt HH M08-1.25x25 C8.8 Z F	6
24	001-5230	Washer flat Ø08 Z	12
25	009-1384	Nut ES M08-1.25 Z TK	6
26	000-1278	Bolt HH M10-1.50x30 C8.8 Z F	2
27	000-2034	Washer flat Ø10 Z	8
28	009-0150	Nut HH M10-1.50 C6 Z MD	4
29	009-5271	Upper plate, distributing unit	1
30	009-5272	Lower plate, distributing unit	1
31	009-5276	Disc flat Ø49x80x1.5 s/steel, distributing unit	1
32	009-5277	Disc conical spring Ø49x80x1.5 s/steel, distributing unit	1
33	009-5278	Threaded bushing M45	1
34	009-5279	Locking ring ES GUK M45-1.50	1

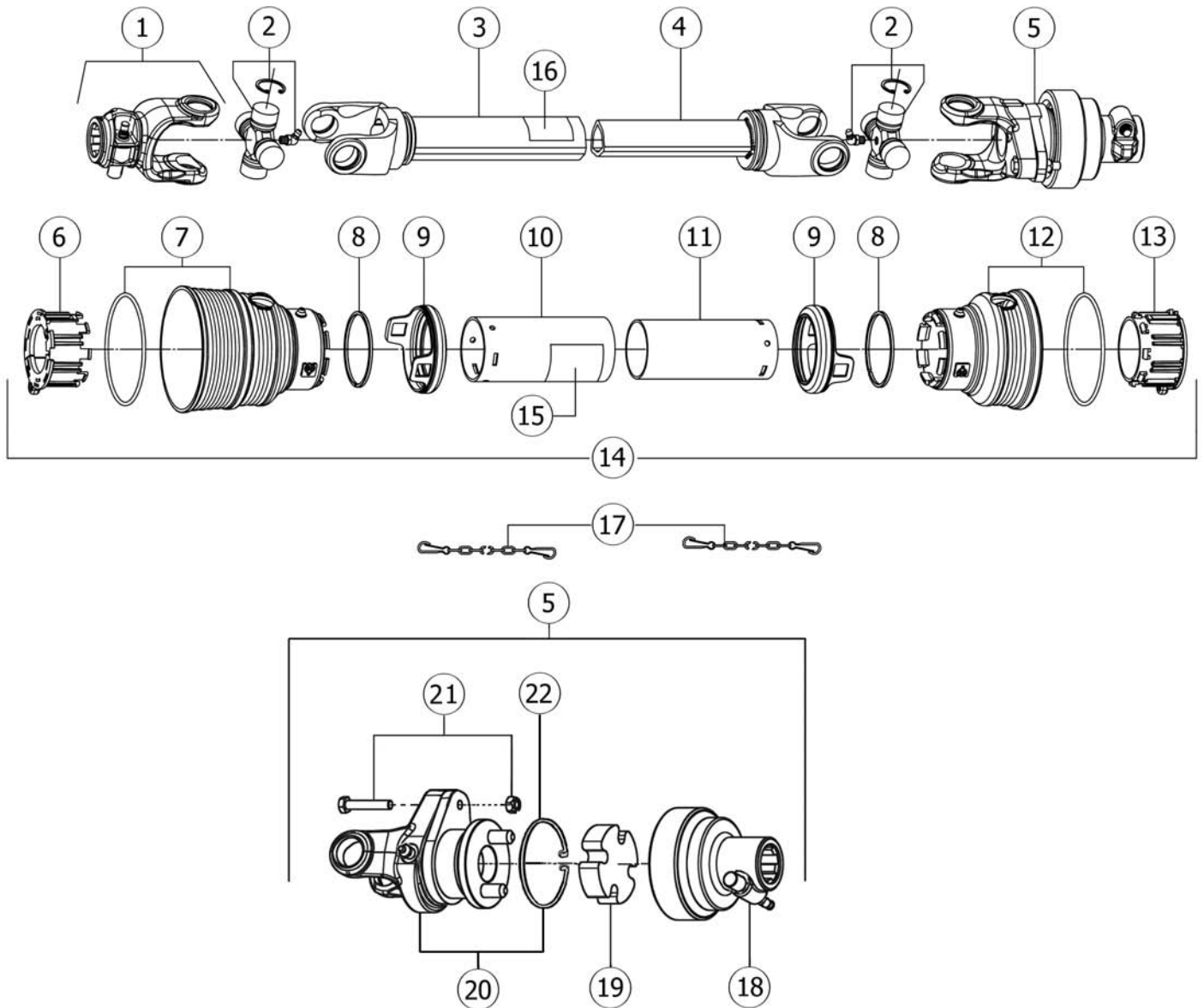


Ref.	Part #	Description	Qty.
1	009-5540	Bracket, opening lever	1
2	009-5090	Washer flat nylon Ø13	1
3	009-5550	Tie rod	1
4	009-5560	Opening lever	1
5	001-4391	Rubber cap	1
6	001-5012	Bolt HH M08-1.25x20 C8.8 Z F	1
7	004-6545	Nut HH M08-1.25 C6 Z MD	1
8	000-2034	Washer flat Ø10 Z	4
9	006-7217	Cotter pin Ø3x35 N	1
10	001-5122	Bolt HH M12-1.75x90 C8.8 Z P	1
11	009-1435	Washer flat Ø14 Z	2
12	501-586B	Spring	1
13	001-3345	Nut ES M12-1.75 Z TK	1
14	009-5049	Spring	1
15	502-933B	Pin, top hitch Ø19x140 Z	1
16	004-6555	Washer flat Ø20 Z	1
17	009-1507	Hairpin cotter Ø4 Z	1
18	005-1849	Spacing disk	2
19	001-8266	Lynch pin Ø11x45 Z	2
20	000-5550	Hitch pin	2
21	000-5351	Washer lock Ø20 Z	2
22	000-5542	Nut HH M20-1.50 C6 Z MD	2
23	009-1446	Bolt HH M08-1.25x25 C8.8 Z F	2
24	001-4514	Washer fender Ø08 Z	4
25	001-5237	Nut ES M10-1.50 Z TN	2
26	009-1384	Nut ES M08-1.25 Z TK	2
27	019-5580	Flywheel protection attachment plate, right	1
28	029-5580	Flywheel protection attachment plate, left	1
29	009-5125	Upper protection, flywheel	1
30	009-5585	Lower protection, flywheel	1
31	009-5588	Spacer, lower protection	2
32	003-2619	Bolt HH M10-1.50x65 C8.8 Z P	2
33	003-0157	Washer fender Ø10 Z	2
34	001-4857	Bolt HH M06-1.00x20 C8.8 Z F	4
35	004-6536	Washer lock Ø06 Z	4
36	005-0166	Washer flat Ø06 Z	4
37	005-1570	Cap	6

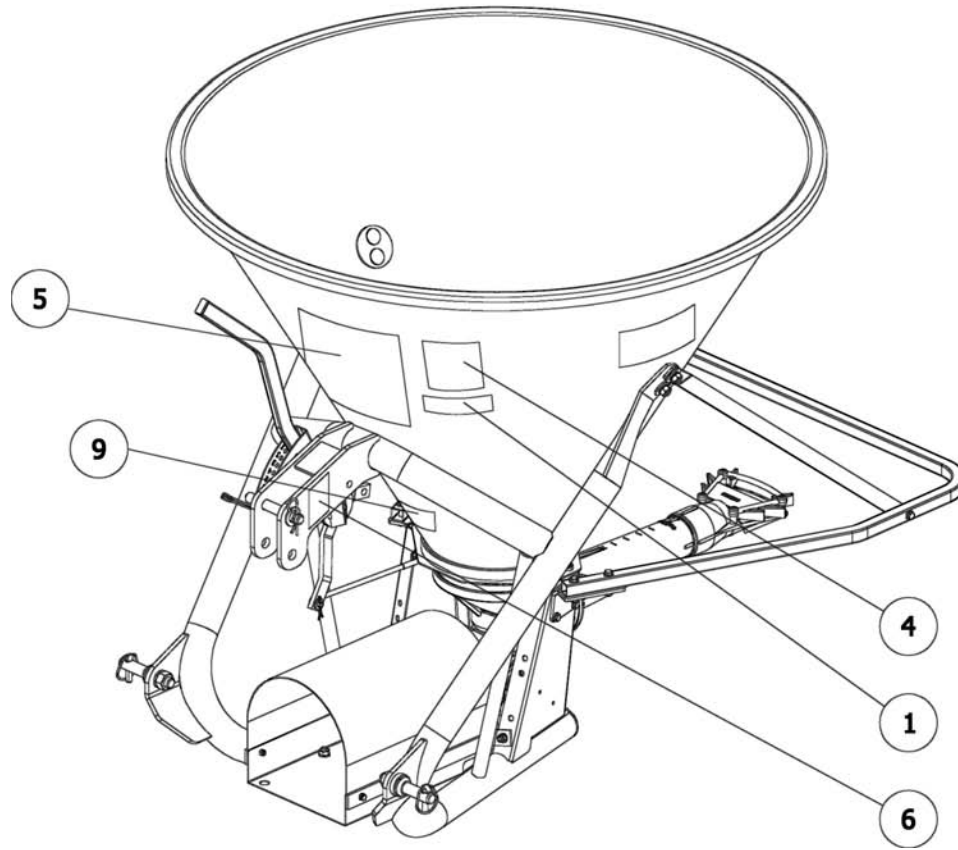
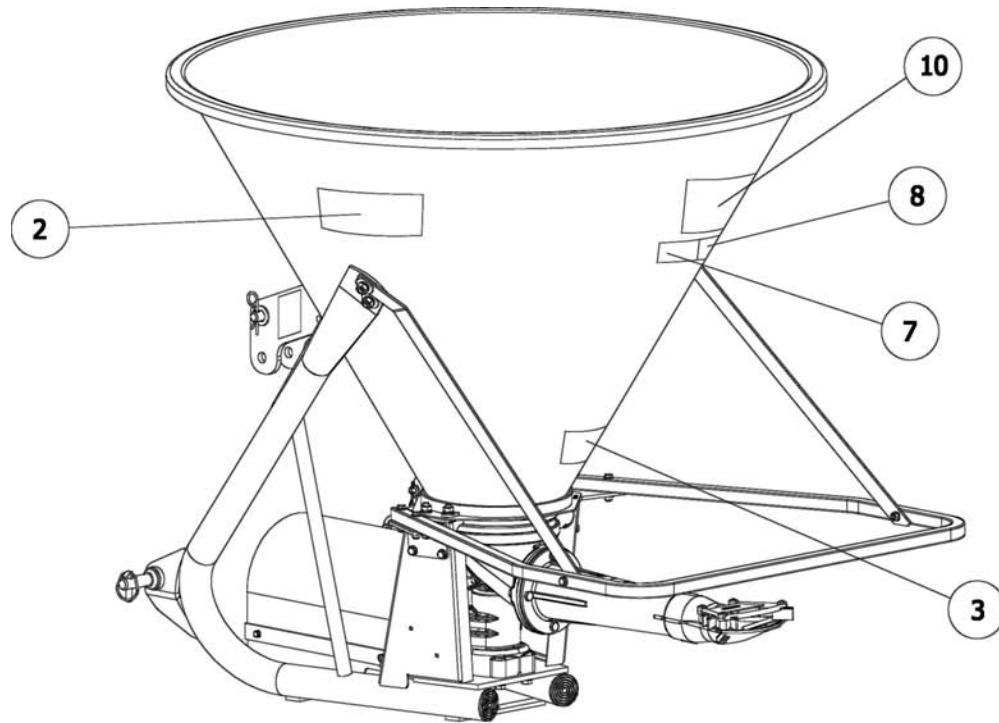


Ref.	Part #	Description	Qty.
1	009-5590	Hopper; 301-300	1
	009-5592	Hopper; 301-400	1
2	009-5340	Protection, spout	1
3	019-5572	Spout protection attachment plate, right	1
4	029-5572	Spout protection attachment plate, left	1
5	009-5260	Tube, spout	1
6	009-5253	Ring, spout	1
7	009-5267	Self tapping screw PN M3.5x13 Z	4
8	009-5266	Fins, spread deflector	1
9	009-5265	Cup, spread deflector	1
10	009-5264	Spread deflector, complete	1
11	002-6329	Bolt HH M10-1.50x45 C8.8 Z F	4
12	000-1280	Washer lock Ø10 Z	4
13	001-4427	Bolt HH M08-1.25x45 C8.8 Z P	6
14	001-5230	Washer flat Ø08 Z	8
15	009-1384	Nut ES M08-1.25 Z TK	6
16	001-4514	Washer fender Ø08 Z	4
17	004-4115	Bolt CR M12-1.75x40 C8.8 Z; 301-300	1
	004-4115	Bolt CR M12-1.75x40 C8.8 Z; 301-400	3
18	000-6594	Bolt CR M12-1.75x45 C8.8 Z	2
19	009-5152	Washer fender Ø16 Z; 301-300	3
	009-5152	Washer fender Ø16 Z; 301-400	1
20	009-5595	Hopper washer w/two holes	2
21	007-6106	Washer fender Ø12 Z; 301-300	3
	007-6106	Washer fender Ø12 Z; 301-400	5
22	000-1077	Washer lock Ø12 Z; 301-300	3
	000-1077	Washer lock Ø12 Z; 301-400	5
23	000-1106	Nut HH M12-1.75 C6 Z MD; 301-300	3
	000-1106	Nut HH M12-1.75 C6 Z MD; 301-400	5
24	009-0150	Nut HH M10-1.50 C6 Z MD	3

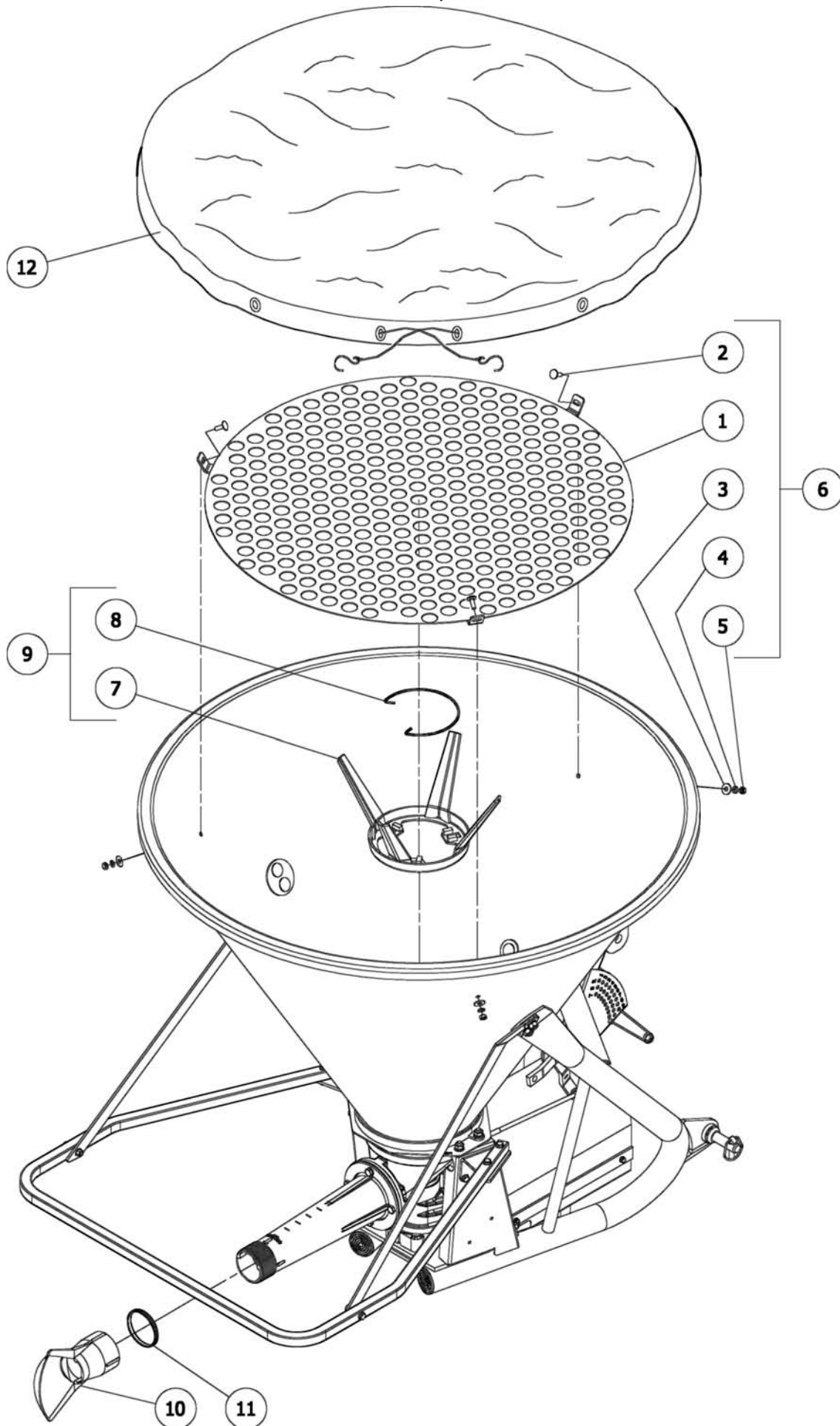
Ref.	Part #	Description	Qty.
1	009-5171	Housing, gearbox	1
2	009-5172	Gasket	1
3	009-5173	Cover, gearbox housing	1
4	000-1278	Bolt HH M10-1.50x30 C8.8 Z F	4
5	003-5060	Washer external lock Ø10 Z	4
6	000-2295	Oil seal 35.62.10 TC	1
7	004-2122	Snap ring, outer Ø35	1
8	002-5332A	Bearing 6207	3
9	009-5179	Spacer, gearbox	1
10	002-5329	Snap ring, inner Ø72	2
11	009-5181	Input shaft, splined	1
12	004-6521	Roll pin Ø6x60	1
13	503-093B	Roll pin Ø10x60	1
14	009-5184	Flywheel	1
15	009-5190	Bronze slide	1
16	009-5193	Yoke	1
17	009-5195	Plug w/washer	1
18	009-5197	Dipstick w/washer	1
19	009-5200	Lower cover, gearbox housing	1
20	009-5202	Gasket, lower cover	1
21	004-6536	Washer lock Ø06 Z	3
22	009-5204	Bolt SC M06-1.00x16 C8.8 Z F	3
23	000-5934	Nut ES M20-1.50 Z TK	1
24	009-5208	Washer external lock Ø20 Z	1
25	004-6555	Washer flat Ø20 Z	1
26	000-6627A	Bearing 6205	1
27	009-5211	Spacer, gearbox	1
28	009-5213	Spacer, gearbox	1
29	009-5217	Oil seal 44.72.10 TC	1
30	009-5220	Cover, gearbox housing	1
31	009-5222	Shaft, splined	1
32	009-5224	Housing	1
33	009-5230	Shim Ø35x45x2.5 s/steel	1
34	009-5231	Snap ring, outer Ø35 s/steel	1
	050-0692	Gearbox complete	1



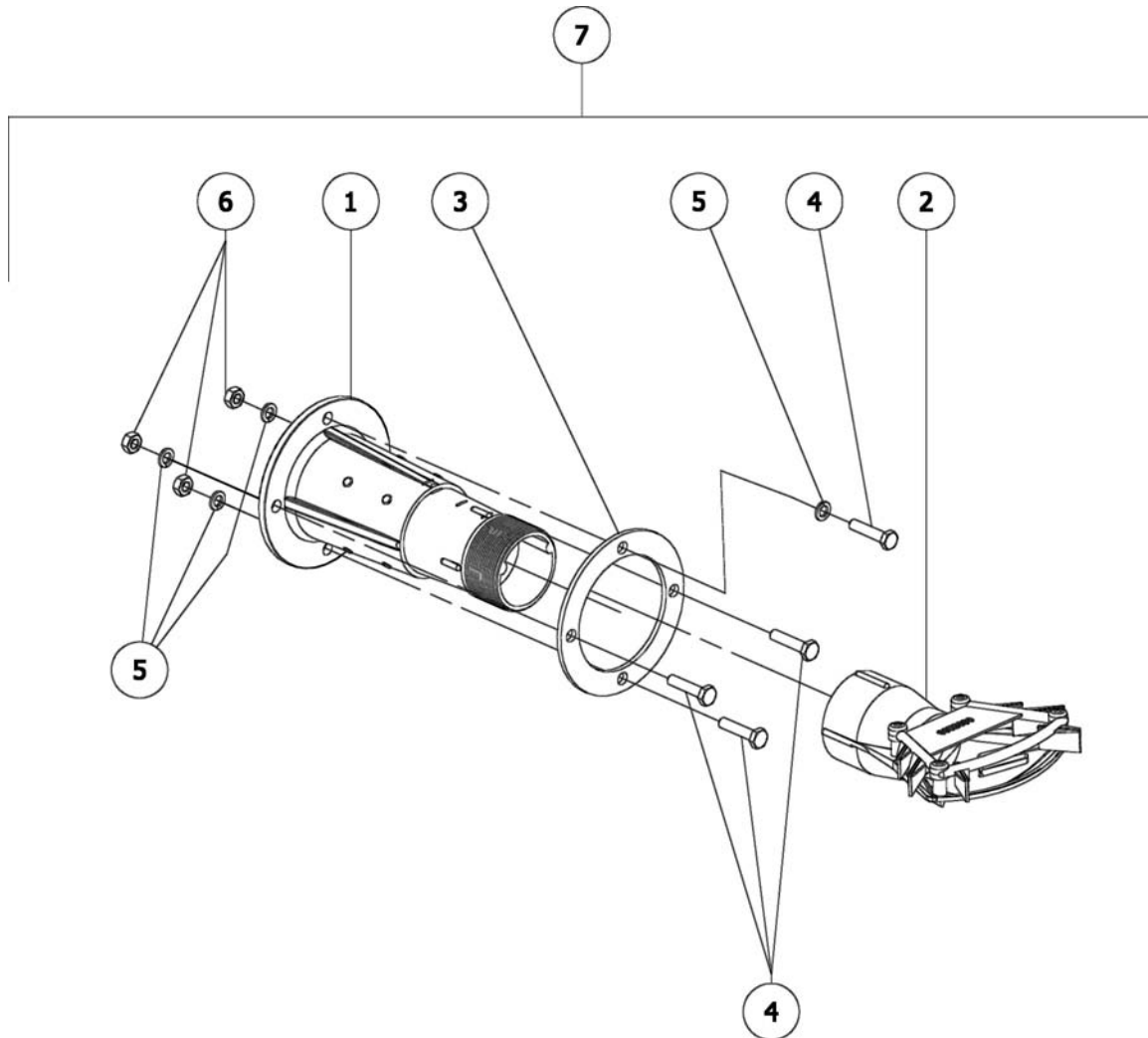
Ref.	Part #	Description	Qty.
1	1021010C	Yoke w/push pin (tractor end)	1
2	1001020C	Cross w/bearing	2
3	1941038NC	Outer tube w/yoke 380	1
4	1951039NC	Inner tube w/yoke 390	1
5	1411080C	Yoke shear pin w/2 pins w/shock absorber 1-3/8" Z6 complete	1
6	1781710C	Locking ring, outer tube	1
7	1781703C	Standard cone	1
8	1211735C	Safety ring	2
9	1881709C	Safety sleeve	2
10	1773035C	Shield, outer tube 350	1
11	1872035C	Shield, inner tube 350	1
12	1781702C	Short cone	1
13	1781711C	Locking ring, inner tube	1
14	96SC1035C	Shield, complete SC 350	1
15	950-463B	Decal "DANGER - Rotating driveline, keep away" outer shield	1
16	950-464B	Decal "DANGER - Guard missing, do not operate" outer tube	1
17	1006065C	Anti-rotation chain	2
18	1002006C	Housing, shock absorber 1-3/8" Z6	1
19	1781273C	Shock absorber	1
20	1481082C	Yoke shear pin w/2 pins	1
21	6690640C	Shear bolt M06-1.00x40 C8.8 N P w/nut PT M06-1.00	1
22	5BP0001154	Snap ring, inner Ø80	1
	050-0495	Driveline w/shock absorber, complete	1



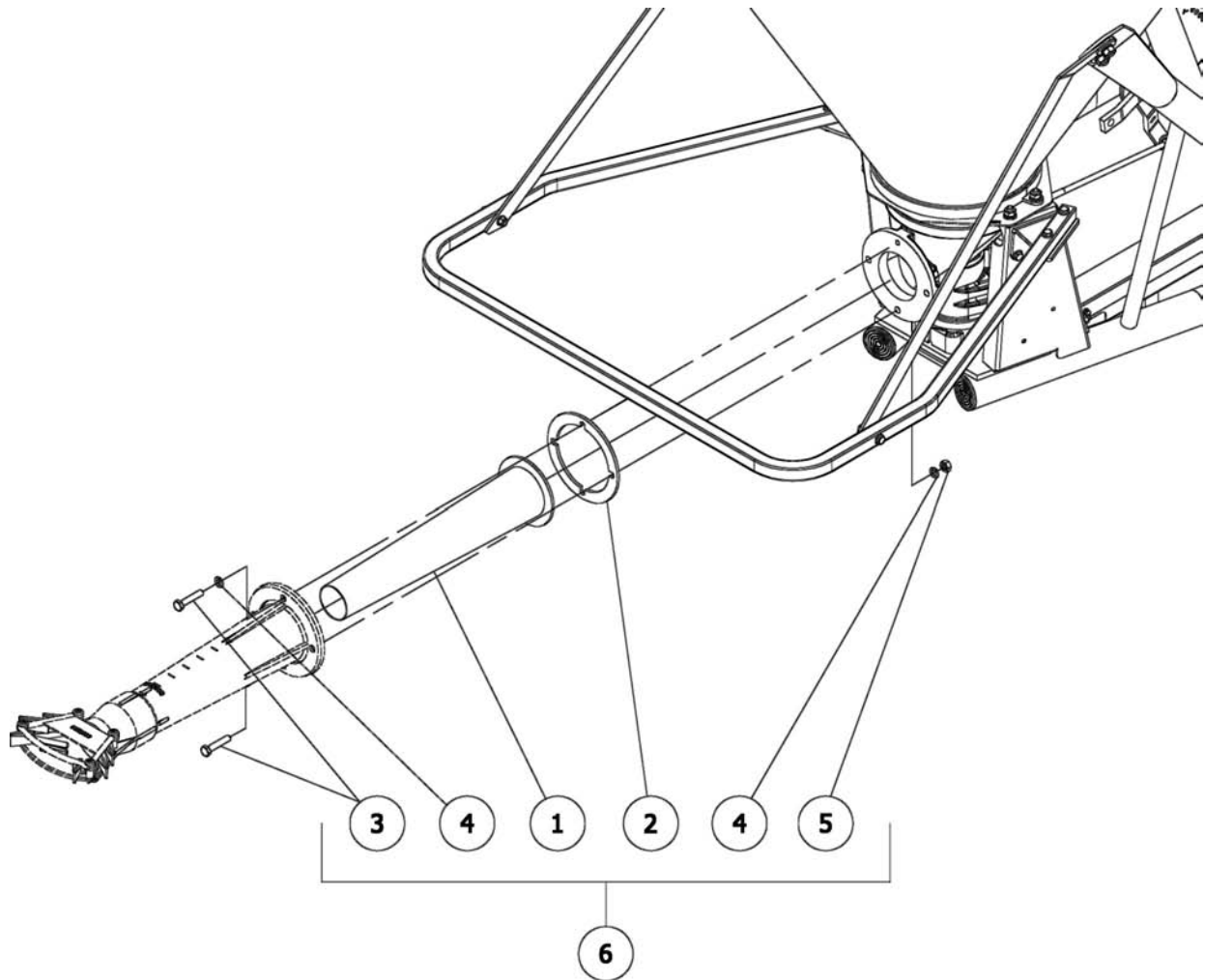
Ref.	Part #	Description	Qty.
1	950-109B	Decal "Danger PTO"	1
2	950-338B	Decal "Warning toxic chemical"	1
3	950-339B	Decal "Warning moving parts"	1
4	950-417B	Decal "Caution avoid injury"	1
5	950-333B	Decal "Spread chart Lbs/Acre"	1
6	950-940B	Decal "Quick hitch compatible"	1
7	950-391B	Decal "301"	1
8	950-327B	Decal "300"	1
	950-371B	Decal "400"	-
9	950-381B	Decal "Befco Inc." address	1
10	950-104B	Decal "B"	1
11	950-353B	Decal "SMV" (option)	1
	971-411B	Operator's Manual 301-300, 400	1
	971-412B	Parts Manual 301-300, 400	1



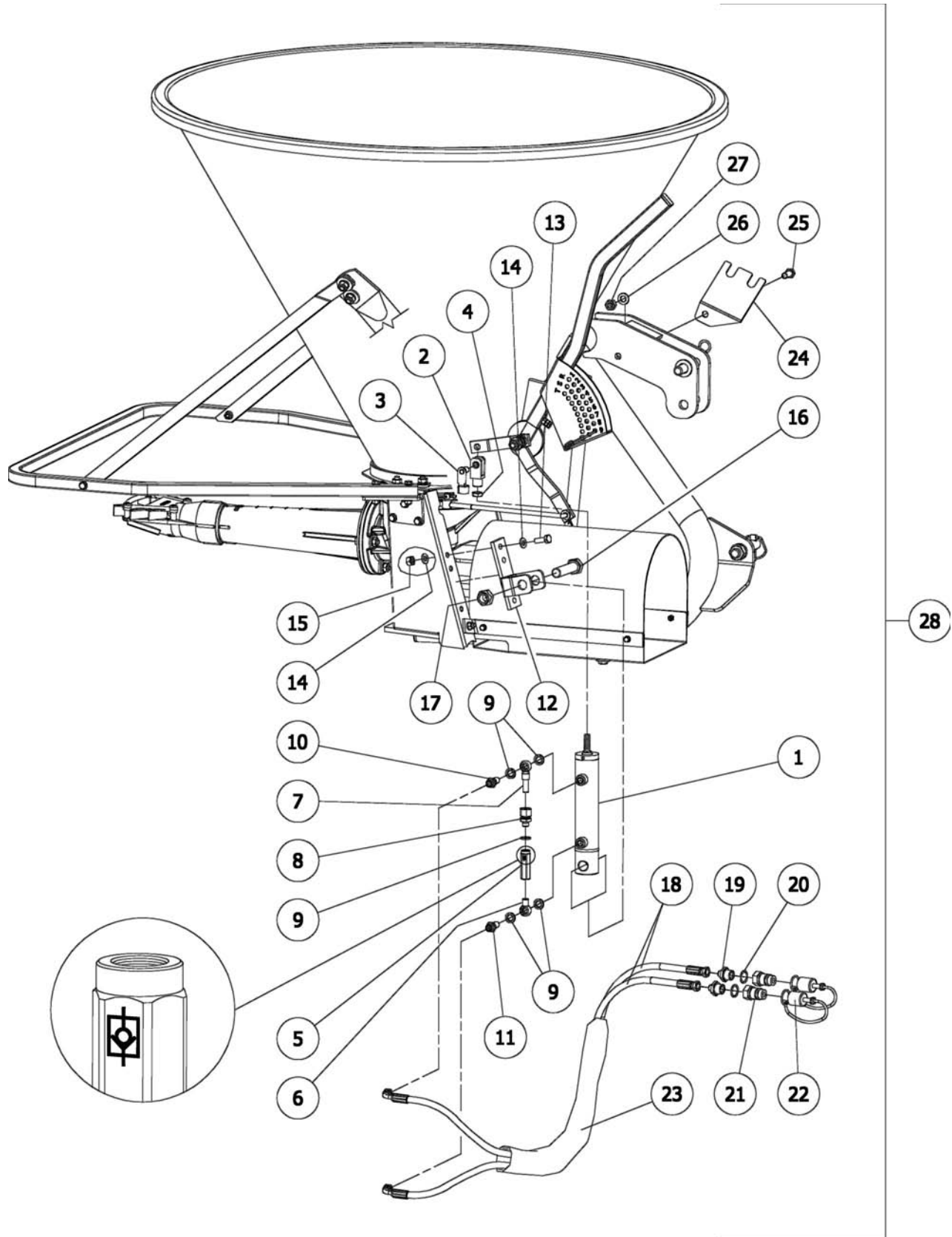
Ref.	Part #	Description	Qty.
1	001-4430	Filter grate	1
2	501-663B	Bolt CR M08-1.25x25 C4.6 Z	3
3	001-4514	Washer fender Ø08 Z	3
4	000-3144	Washer lock Ø08 Z	3
5	004-6545	Nut HH M08-1.25 C6 Z MD	3
6	009-9913	Filter grate, complete	1
7	009-5400	Powder agitator	1
8	009-5395	Spring, powder agitator	1
9	009-9453	Agitator extension, complete	1
10	009-5370	Directional attachment, complete	1
11	001-4984	Lock nut, spout	1
12	009-9722	Hopper cover; 301-300	1
	009-9723	Hopper cover; 301-400	1



Ref.	Part #	Description	Qty.
1	009-5380	Tube, short spout	1
2	009-5264	Spread deflector, complete	1
3	009-5253	Ring, spout	1
4	002-6329	Bolt HH M10-1.50x45 C8.8 Z F	4
5	000-1280	Washer lock Ø10 Z	4
6	009-0150	Nut HH M10-1.50 C6 Z MD	3
7	009-9452	Short spout, complete	1



Ref.	Part #	Description	Qty.
1	009-5373	Rubber insert	1
2	009-5375	Ring, rubber insert	1
3	003-0331	Bolt HH M10-1.50x50 C8.8 Z F	4
4	000-1280	Washer lock Ø10 Z	4
5	009-0150	Nut HH M10-1.50 C6 Z MD	3
6	009-9451	Rubber insert, complete	1



Ref.	Part #	Description	Qty.
1	009-5424	Hydraulic cylinder	1
2	001-7221	Yoke M12, hydraulic cylinder	1
3	002-3964	Fixing pin Ø12, hydraulic cylinder	1
4	001-7223	Nut HH M12-1.75 C6 Z TN	1
5	009-5450	Relief valve 1/4" FBSPPx1/4" FBSPP	1
6	009-5451	Bolt eye 1/4"x1/4" MBSPT	1
7	009-5452	Bolt eye SP 1/4"x56 mm.	1
8	009-5453	Adaptor for 12 mm. tube 1/4" MBSPP	1
9	009-5454	Washer bonded sealing 1/4" Z	5
10	009-5455	Adaptor SP 1/4" MBSPPx1/4" MBSPP	1
11	009-5456	Adaptor SP 1/4" MBSPPx1/4" MBSPP w/restrictor	1
12	009-5600	Bracket, hydraulic cylinder	1
13	000-1278	Bolt HH M10-1.50x30 C8.8 Z F	3
14	000-2034	Washer flat Ø10 Z	6
15	001-5237	Nut ES M10-1.50 Z TN	3
16	002-3837	Bolt HH M20-2.50x90 C8.8 Z P	1
17	009-2276	Nut ES M20-2.50 Z TN	1
18	009-5442	Hydraulic hose 1/4"x2000 mm. w/90 degree fitting	2
19	008-2488	Adaptor STR 1/4" MBSPPx1/2" MBSPP	2
20	003-6532	Washer copper sealing 1/2"	2
21	004-1871	1/2" Male quick coupler 1/2" FBSPP	2
22	006-3396	Rubber cap	2
23	006-3398	Hose sleeve	1
24	009-5448	Plate, hydraulic hose retainer	1
25	001-5255	Bolt HH M12-1.75x30 C8.8 Z F	1
26	000-2265	Washer flat Ø12 Z	1
27	009-4139	Nut ES M12-1.75 Z TN	1
28	009-9456	Hydraulic control, complete	1

Use only original spare parts

All rights reserved. It is unlawful to copy, reprint or use any of the information or details in this manual without the expressed written permission of the Company. Technical information provided in this manual is approximate, the Company reserves the right to modify or improve the models shown for technical or commercial purposes. Pictures in this manual do not necessarily show the machine as delivered.

BEFCO[®]

P.O. Box 6036
Rocky Mount, NC 27802-6036
Tel.: 252.977.9920 - Fax: 252.977.9718
www.befco.com

